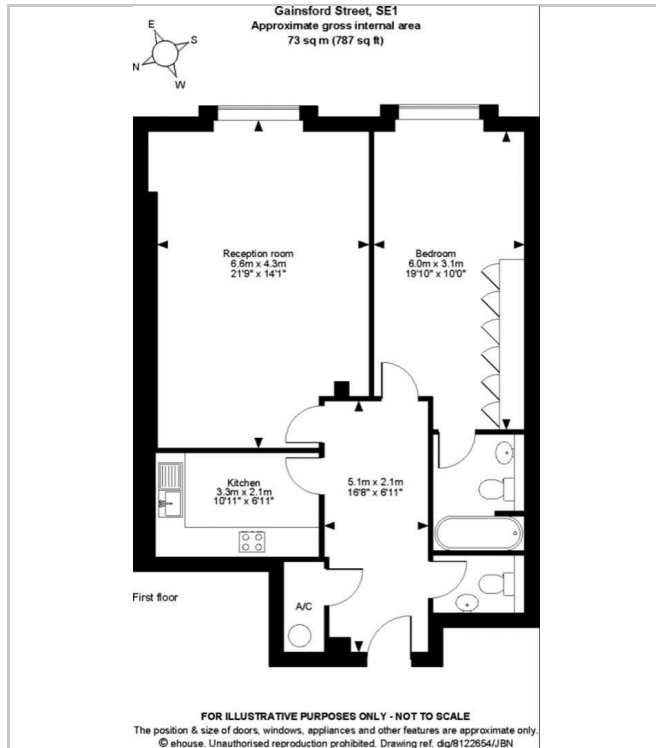




18 Gainsford Street, London, SE1 SE1  
£2,450 Per month



## Floor Plan



## Accommodation

\*\*All enquiries or viewing requests should be submitted online via this advert - Thank you \*\*

A one bedroom warehouse apartment located in Shad Thames.

The property benefits from high ceilings and is in excellent condition throughout. The apartment offers a spacious reception room with a separate newly refurbished fully integrated kitchen, a large double bedroom with an en suite bathroom and there is also a guest cloakroom just off the hallway. The apartment has retained its warehouse features including a loading bay door and original style windows. Tamarind Court has lift access and is located close to the River Thames and all the bars, restaurants and shops that the area has to offer. London Bridge (National Rail services, Northern and Jubilee lines) and Tower Hill (District and Circle line) stations are both close by.

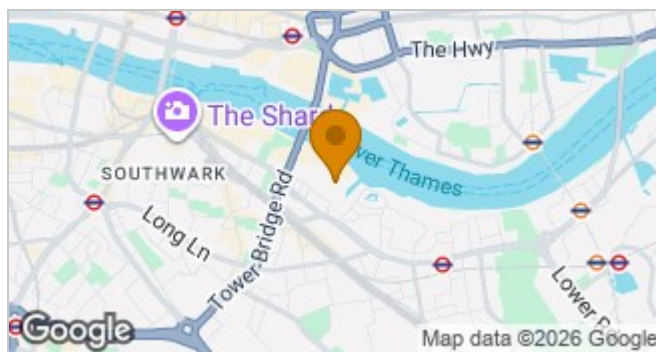
Gainsford Street is situated moments from the attractive walkways of the River Thames, trendy Butlers Wharf and Borough Market.

Early viewings are highly recommended.  
No smokers.

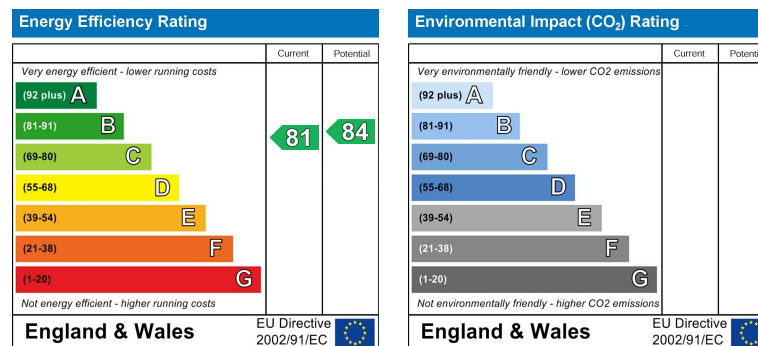
- Price - rent £2450
- Deposit £2,826
- Length of tenancy 12 months
- Council tax band E



## Area Map



## Energy Efficiency Graph



Please contact the HAUZOO office if you wish to arrange a viewing appointment for this property or require further information.  
HAUZOO, 3rd Floor 86-90 Paul Street, London, EC2A 4NE  
Tel: 02038784479 Email: enquiries@hauzoo.co.uk <https://www.hauzoo.co.uk>

These particulars, whilst believed to be accurate are set out as a general outline only for guidance and do not constitute any part of an offer or contract. Intending purchasers should not rely on them as statements of representation of fact, but must satisfy themselves by inspection or otherwise as to their accuracy. No person in this firm's employment has the authority to make or give any representation or warranty in respect of the property.