



Heathfield Gardens, London, W4
£1,395,000

WHITMAN & CO.
SALES · LETTINGS · COMMERCIAL



A well presented, wider than average end of terrace period home located on this sought after residential road running South off Turnham Green.

The house comprises; entrance hall, front reception room, full-width West facing kitchen/family room with larder, a sunny private garden with side access, utility room, WC, master bedroom with luxury ensuite, three further double bedrooms, family bathroom, extensive eaves storage, secure covered store, a host of character features.

Heathfield Gardens is a wide tree-lined street within a short walk of Chiswick High Road's shops, cafes and restaurants. Transport links include Gunnersbury and Chiswick Park Stations, local bus routes and easy access onto the A4/M4 for routes in and out of London.



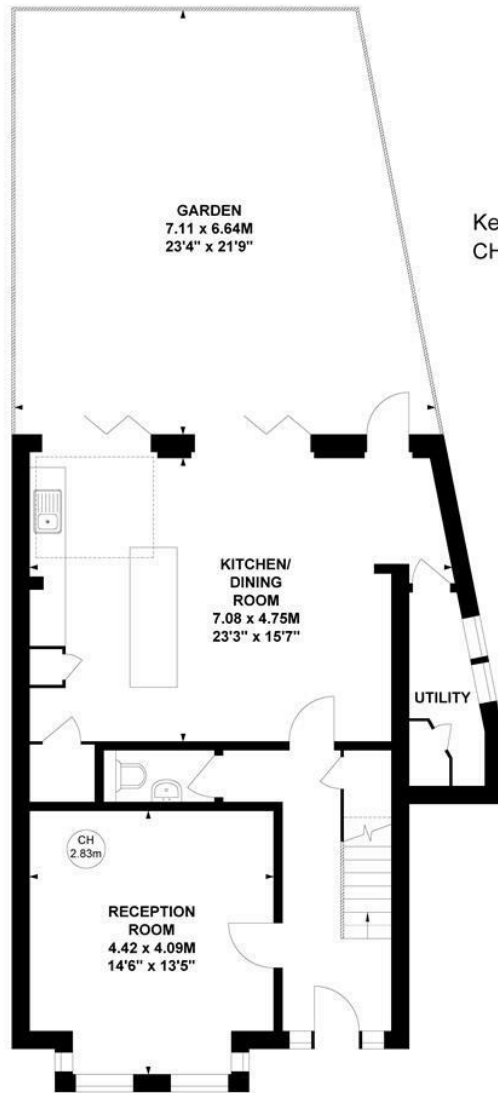
Heathfield Gardens, W4

Approximate gross internal area

167.87 sq m / 1807 sq ft

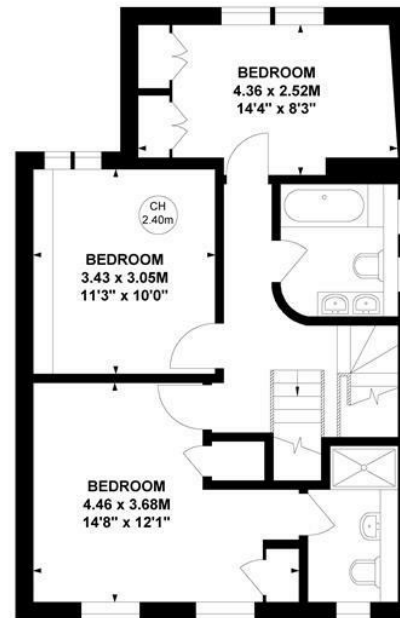
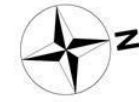
(Including Eaves Storage)

Eaves Storage : 16.63 sq m / 179 sq ft

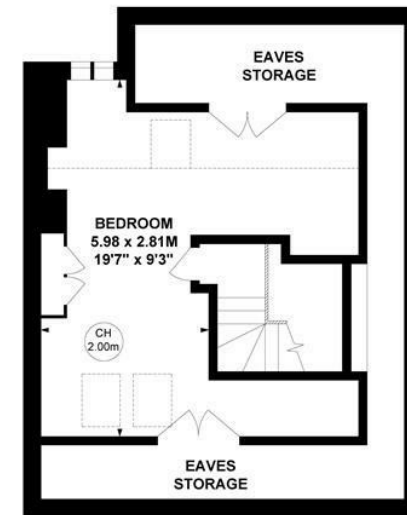


Ground Floor

Key :
CH - Ceiling Height



First Floor



Second Floor

Not to scale, for guidance only and must not be relied upon as a statement of fact.

All measurements and areas are approximate only

- End of terrace period home
- Full width kitchen/family room
- Close to Chiswick High Road

- West facing garden
- Sought after residential road
- Master bedroom with ensuite

Tenure - Freehold
Local Authority - Hounslow
Council Tax - Band G

