

SW19

it's all in the postcode...



5 Nelson Grove Road

£365,000

- Purpose built apartment
- Two double bedrooms
- Sought after location
- No onward chain
- Near to Northern line tube
- Council tax Band C
- EPC Rating C



020 8544 2828

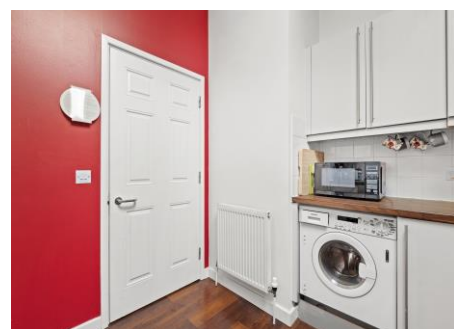
Wimbledon: Wimbledon Park: Colliers Wood

www.SW19.com

SW19 Estate Agents Ltd. Is registered in England & Wales No. 05508737

it's all in the postcode...

A beautifully presented two double bedroom, top floor purpose-built apartment set within a highly sought-after location, just moments from South Wimbledon Northern Line tube station. Occupying the top floor, the property offers a bright and spacious feel throughout, featuring a generous lounge/diner ideal for both relaxing and entertaining. The separate kitchen is well appointed, and both bedrooms are comfortable doubles, making the layout perfectly suited to first-time buyers, professional couples, or those seeking a smart investment in SW19. Further benefits include the addition of private solar panels, providing improved energy efficiency and long-term savings. This superb home presents an excellent opportunity to secure a well-located, move-in-ready property in one of South West London's most popular areas.

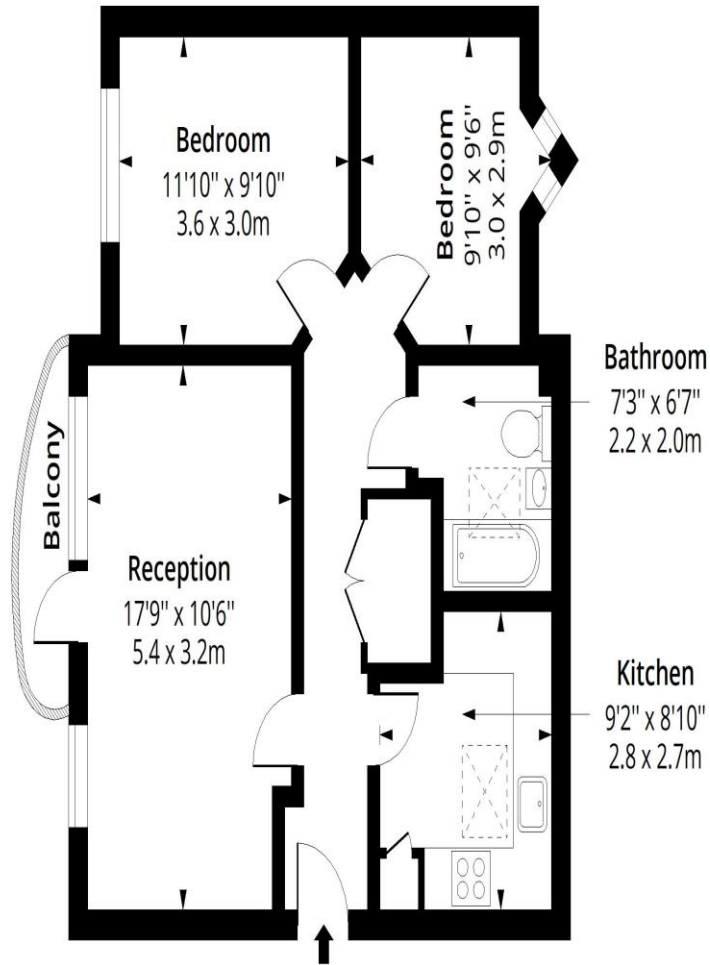
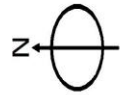


020 8544 2828
Wimbledon: Wimbledon Park: Colliers Wood
www.SW19.com
SW19 Estate Agents Ltd. Is registered in England & Wales No. 05508737

'it's all in the postcode...'

Nelson Grove Road, SW19

Approx. Gross Internal Area 636 Sq Ft - 59.08 Sq M
Approx. Gross Balcony Area 24 Sq Ft - 2.23 Sq M



Second Floor

Floor Area 636 Sq Ft - 59.08 Sq M



Measured according to RICS IPMS2. Floor plan is for illustrative purposes only and is not to scale. Every attempt has been made to ensure the accuracy of the floor plan shown, however all measurements, fixtures, fittings and data shown are an approximate interpretation for illustrative purposes only. 1 sq m = 10.76 sq feet.

lpaplus.com

Date: 7/1/2026

020 8544 2828
Wimbledon: Wimbledon Park: Colliers Wood
www.SW19.com
SW19 Estate Agents Ltd. Is registered in England & Wales No. 05508737

'it's all in the postcode...'

These particulars are for guidance only and should not be relied upon as a statement or representation of fact. All measurements given are approximate only and should not be relied upon for ordering carpets, equipment etc. Purchasers should satisfy themselves by inspection or otherwise as to the accuracy of the statements contained within. Neither SW19 estate agents ltd or related companies or their employees can confirm structural conditions of the property or that any appliances or other facilities are in working order. Purchasers are strongly recommended to arrange their own survey.

020 8544 2828

Wimbledon: Wimbledon Park: Colliers Wood

www.SW19.com

SW19 Estate Agents Ltd. Is registered in England & Wales No. 05508737

'it's all in the postcode...'