



Auckland Hill, SE27 | £600,000

02087029888

westnorwood@pedderproperty.com

pedder
We live local



In General

- Freehold
- Two double bedrooms
- Off street parking
- Private garden
- Balcony
- Good location
- Ample storage

In Detail

A beautifully presented two double bedroom freehold home, ideally positioned on the sought-after Auckland Hill, SE27.

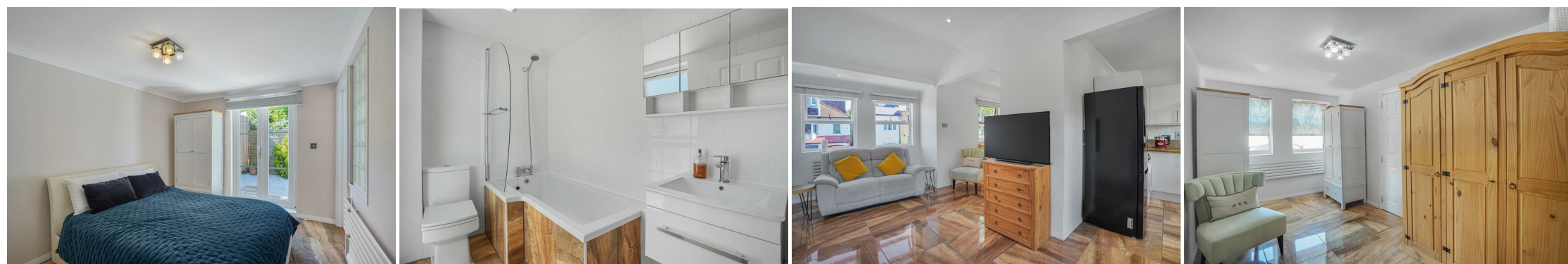
Upon entering, you are welcomed by two generously proportioned double bedrooms, both thoughtfully designed. The principal bedroom benefits from double doors opening directly onto the beautifully maintained, low-maintenance rear garden, as well as convenient access to the contemporary family bathroom. The ground floor also offers bespoke understairs storage, providing a practical solution for everyday living.

The first floor is equally impressive, featuring a bright and spacious open-plan reception room with double doors opening onto a private balcony overlooking the garden, creating a wonderful space for relaxing or entertaining. The modern, well-appointed kitchen offers ample storage and worktop space, while a separate WC completes the accommodation on this level. The property also benefits from a boarded loft which has been newly insulated, providing excellent additional storage.

Ideally located on Auckland Hill, the property is within easy reach of West Norwood, Tulse Hill and Gipsy Hill stations, offering regular services to London Bridge, London Victoria and London Blackfriars, together with convenient Thameslink connections.

West Norwood itself offers an excellent selection of independent cafés, bars and restaurants, alongside a range of everyday amenities, including the popular Picturehouse Cinema and the recently refurbished library. Residents can also enjoy a variety of nearby green spaces, well-regarded parks and highly regarded schools, making this an ideal home for professionals, couples and families alike.

EPC: C | Council Tax Band: C




Floorplan

Auckland Hill, SE27

Total* = 61.3 sq. m / 695.8 sq. ft

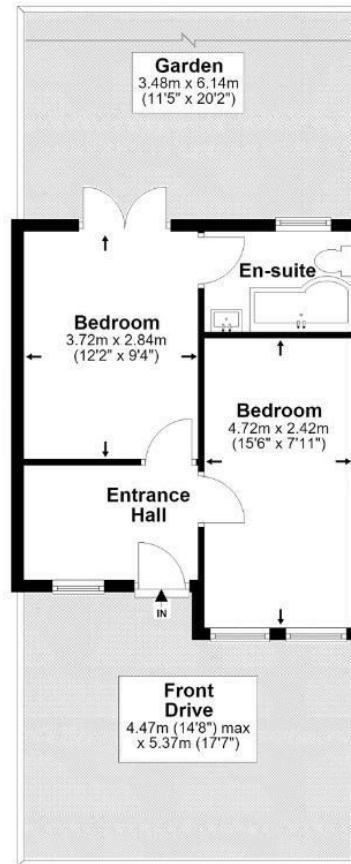
First Floor = 28.9 sq. m / 310.8 sq. ft

Ground Floor = 32.4 sq. m / 349.0 sq. ft

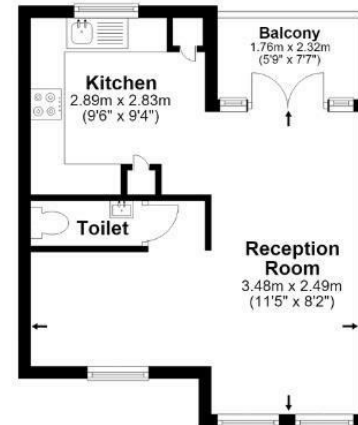
 = Reduced head room below 1.5m



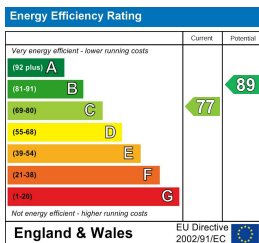
Ground Floor



First Floor



*All measurements are approximate and do not include eaves space. The plans are for representation purposes only as defined by RICS - 'Code of Measurement Practice'. The plans are not to scale. Please personally check all sizes, dimensions, shapes and compass bearings before making any decisions reliant upon them. Copyright The Pedder Group © 2026.



Pedder Property Ltd trading as Pedder for themselves and for the vendor/landlord of this property whose agents they are, give notice that (1) these particulars do not constitute any part of an offer or contract, (2) all statements contained within these particulars are made without responsibility on the part of Pedder or the vendor/landlord, (3) whilst made in good faith, none of the statements contained within these particulars are to be relied upon as a statement of representation or fact, (4) any intending purchaser/tenant must satisfy him/herself by inspection or otherwise as to the correctness of each of the statements contained within these particulars, (5) the vendor/landlord does not make or give either Pedder or any person in their employment any authority to make or give representation or warranty whatsoever in relation to this property.