



CHATTERTON | REES



20 Glenrosa Street

, London, SW6 2QZ

£875,000



2



2



1



20 Glenrosa Street



Description

Occupying the upper floors of an attractive period conversion, this well presented two bedroom, two bathroom apartment offers generous living space, plenty of natural light and a private south facing roof terrace.

The bay fronted reception room is bright and spacious, providing an excellent living and entertaining space. The apartment has been finished to a high standard throughout and features two good sized double bedrooms, including a principal bedroom on the second floor with Velux windows and a modern en suite bathroom.

To the rear, the renovated eat in kitchen is both practical and well designed, with direct access to the private south facing roof terrace, an ideal spot for outdoor dining or enjoying the afternoon sun.

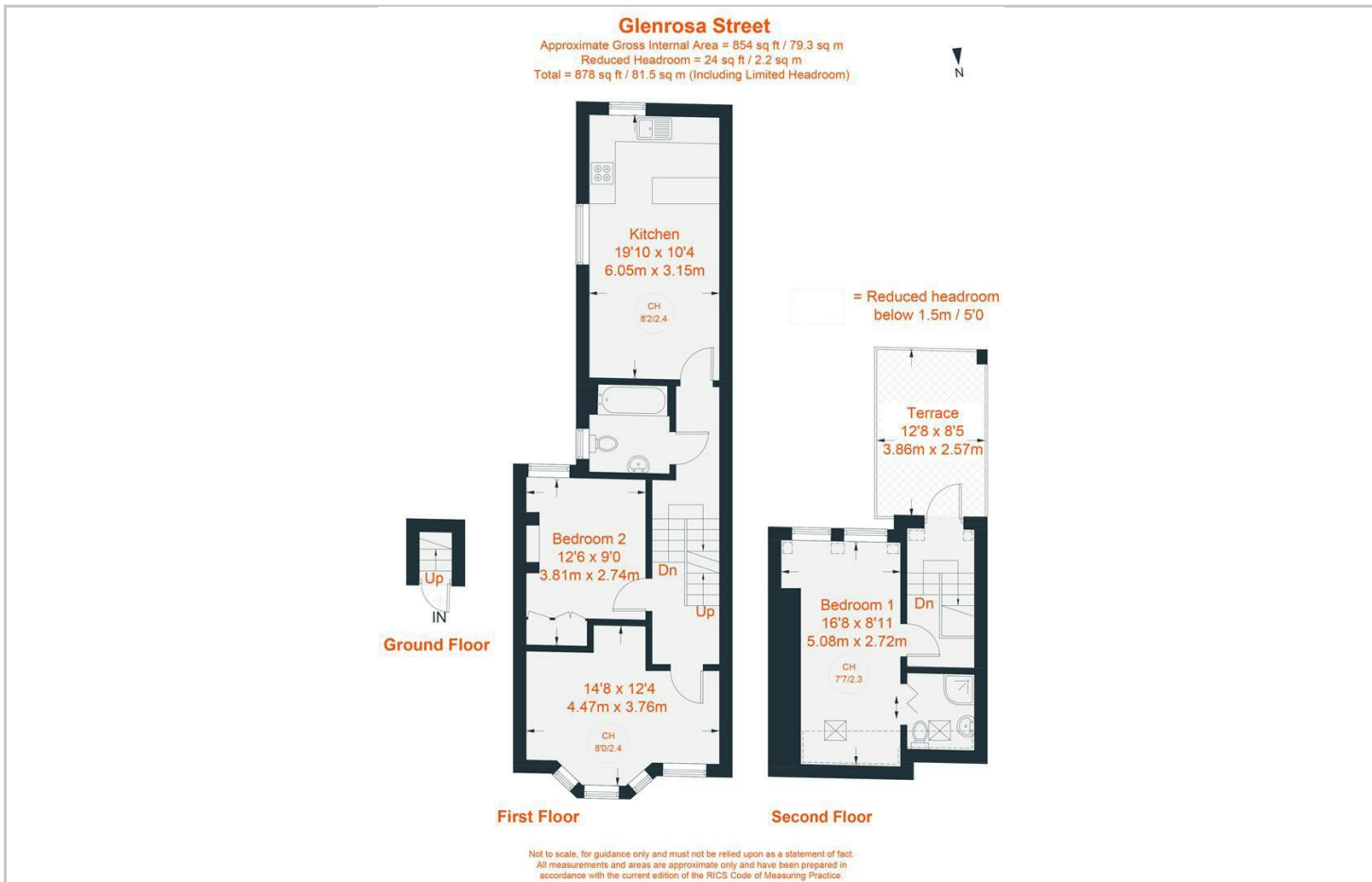
The property is situated on a quiet residential street in the heart of Fulham, just a short walk from the cafés, restaurants and independent shops of Wandsworth Bridge Road. Local amenities, including

- 2 Bedrooms
- En Suite Shower Room
- Kitchen
- Bathroom
- Reception Room
- Roof Terrace

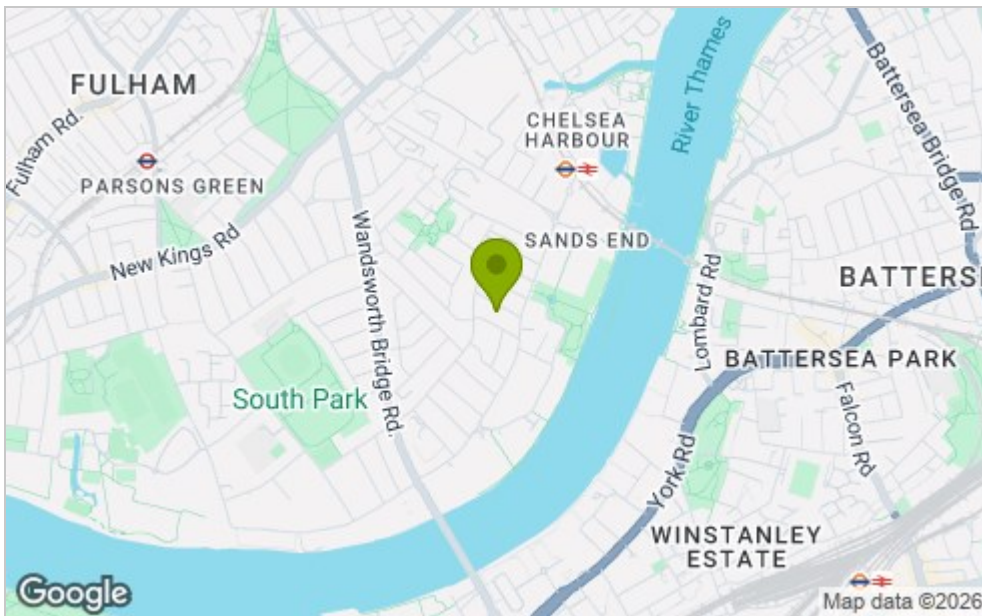




Floor Plan



Area Map



Viewing

Please contact our Chatterton Rees Office on 020 3780 0580 if you wish to arrange a viewing appointment for this property or require further information.

Energy Efficiency Graph

Energy Efficiency Rating		Current	Potential
Very energy efficient - lower running costs			
(92 plus) A			
(81-91) B			
(69-80) C			
(55-68) D			
(39-54) E			
(21-38) F			
(1-20) G			
Not energy efficient - higher running costs			
England & Wales		EU Directive 2002/91/EC	
Environmental Impact (CO ₂) Rating		Current	Potential
Very environmentally friendly - lower CO ₂ emissions			
(92 plus) A			
(81-91) B			
(69-80) C			
(55-68) D			
(39-54) E			
(21-38) F			
(1-20) G			
Not environmentally friendly - higher CO ₂ emissions			
England & Wales		EU Directive 2002/91/EC	

These particulars, whilst believed to be accurate are set out as a general outline only for guidance and do not constitute any part of an offer or contract. Intending purchasers should not rely on them as statements of representation of fact, but must satisfy themselves by inspection or otherwise as to their accuracy. No person in this firm's employment has the authority to make or give any representation or warranty in respect of the property.