



Armstrong Gibbs Court, The Causeway, Great Baddow
CM2 7FR
Guide Price £250,000 - £260,000
Leasehold

Palmer & Partners

The leading independent agents in Essex & Suffolk

palmerpartners.com

- No onward chain
- Immaculately presented two bedroom apartment
- High quality kitchen with integrated appliances
- Two double bedrooms
- Luxury bathroom
- One allocated parking space
- Gas central heating with radiators
- Ideally situated in the sought after Great Baddow close to local amenities and excellent transport links
- Must be viewed



Offered for sale with no onward chain, this immaculately presented two bedroom apartment provides high quality, stylish accommodation in the heart of Great Baddow.

Finished to an excellent standard throughout, the property is ideally suited to first time buyers, downsizers or professionals seeking a well positioned and low maintenance home with excellent transport connections.

The apartment is centrally located within the historic Great Baddow area of Chelmsford and benefits from a private allocated parking space, along with ample communal visitor parking close by. The development is set within attractive landscaped gardens and has been thoughtfully designed, with the property accessed via a communal entrance and stairwell serving just five

apartments, creating a more private and self contained feel.

Internally, the accommodation comprises an impressive open plan dual aspect kitchen, lounge and dining area, providing a bright and spacious living environment. The high quality kitchen is fitted with a comprehensive range of wall and base units, granite work surfaces and fully equipped with integrated appliances.

There are two well proportioned double bedrooms, one of which benefits from a built-in wardrobe, alongside a luxurious contemporary bathroom featuring a panel enclosed bath with shower over, WC, wash hand basin with vanity storage and a large storage cupboard.

Additional features include gas central heating with radiators, elegant sash



windows throughout and coordinated dark wood doors, skirting boards and architraves, all contributing to the apartment's refined finish.

The location offers excellent access to local shops and amenities, as well as convenient transport links including the A12, A130, regular bus services and a nearby park-and-ride facility, providing easy access to

Chelmsford City Centre and its mainline railway station.

Palmer & Partners strongly recommend early internal viewing to fully appreciate the quality, presentation and location of this impressive apartment.



Entrance Hall

Kitchen Lounge Diner: 2.9 x 8.2

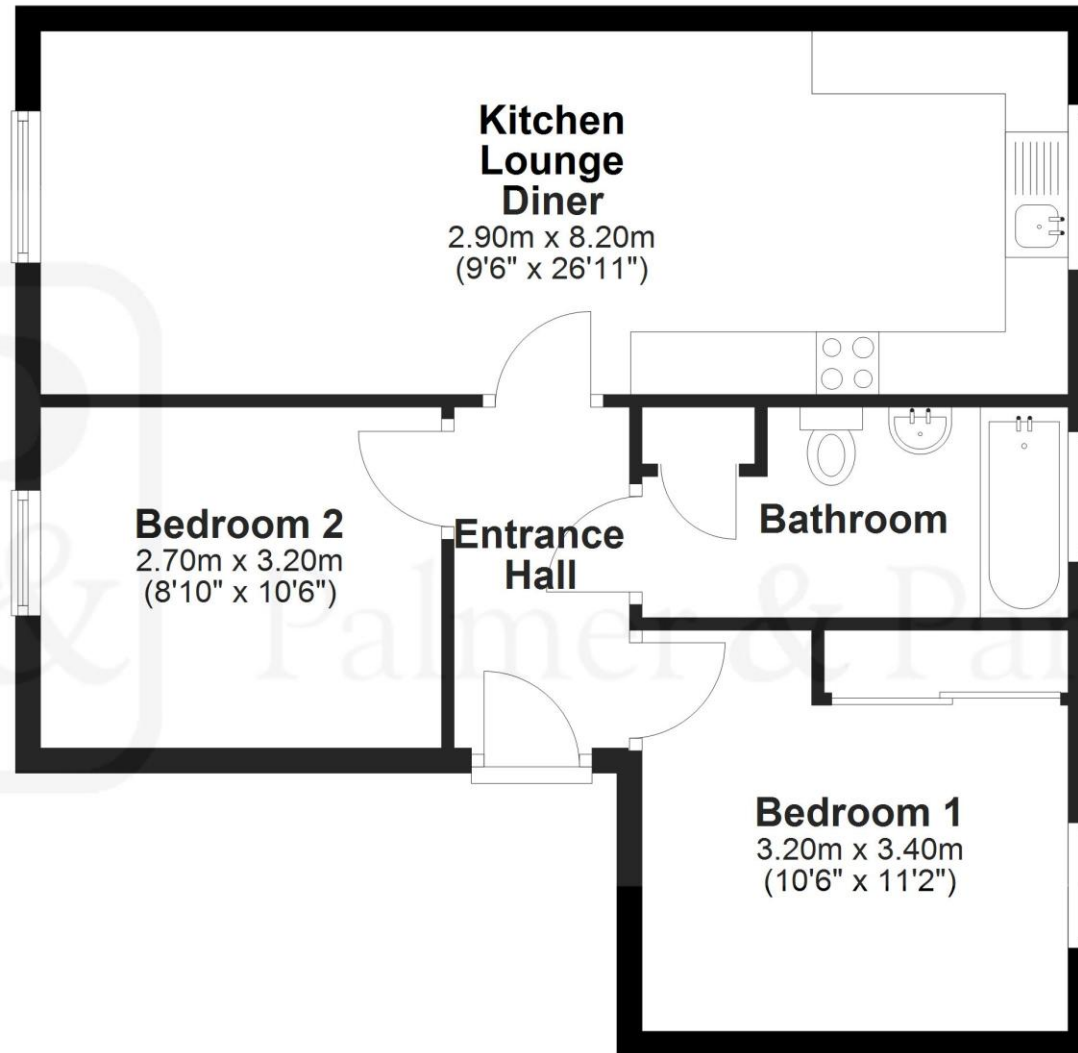
Bedroom 1: 3.2 x 2.7

Bedroom 2: 3.1 x 3.4

Bathroom

Ground Floor

Approx. 54.5 sq. metres (586.9 sq. feet)



Total area: approx. 54.5 sq. metres (586.9 sq. feet)

Armstrong Gibbs Court, Great Baddow

Palmer and Partners would like to draw your attention to the following: I] these particulars do not constitute part of an offer or contract. II] These particulars and any pictures or plans represent the opinion of the author and are given in good faith for guidance only and must not be construed as statement or fact. III] Nothing in these particulars shall be deemed a statement that the property is not in good condition or otherwise. We have not carried out a structural survey of the property and have not tested services, appliances and special fittings IV] measurements are generally taken by the use of a sonic measuring machine and will usually be the largest measurements of the room in question.





182 Moulsham Street, Chelmsford, Essex, CM2 0LG

chelmsford@palmerpartners.com

Palmer & Partners

The leading independent agents in Essex & Suffolk

[palmerpartners.com](https://www.palmerpartners.com)