

Location:

Munster Court is set just between South Acton station (Overground) and Acton Town station (Piccadilly and District Line) as well as the M4/A4. Chiswick Park Station and The High Road are also within short walking distance.

Key points:

- Two bedroom apartment
- Two bathrooms (one en-suite)
- Eighth & top floor
- 862 sq ft / 80.1 sq m
- Private underground parking space
- Private south-facing balcony

Do Better:

Acton
sales@astonrowe.co.uk

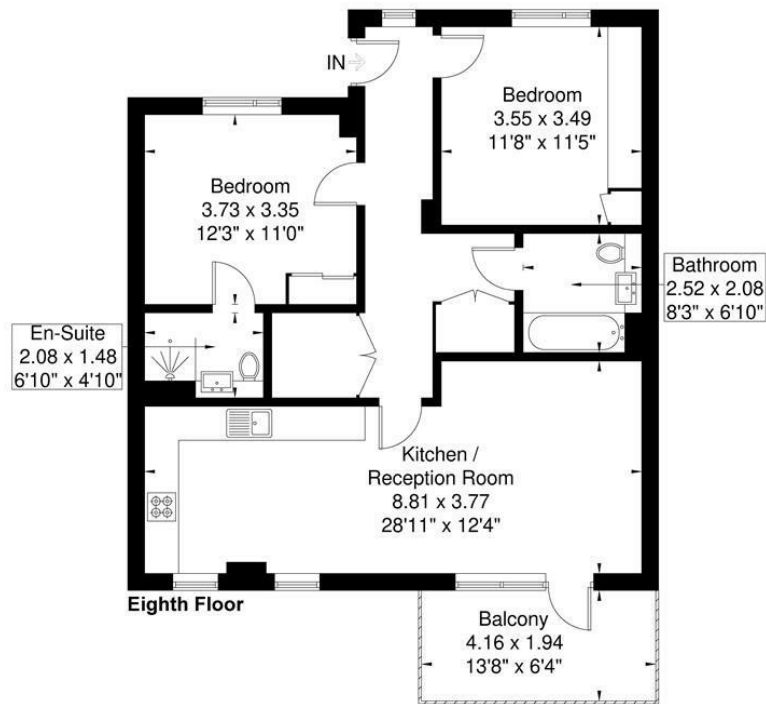
57-59 Churchfield Road,
Acton, London, W3 6AY

020 8992 3600

Aston Rowe



Munster Court
Approximate Gross Internal Area = 80.1 sq m / 862 sq ft



Although every attempt has been made to ensure accuracy, all measurements are approximate. The floorplan is for illustrative purposes only and not to scale.
© www.perspective.co.uk

Energy Efficiency Rating		Environmental Impact (CO ₂) Rating	
Current	Potential	Current	Potential
83			

Energy Efficiency Rating: A (83) - Very energy efficient - lower running costs. Environmental Impact (CO₂) Rating: A (83) - Very environmentally friendly - lower CO₂ emissions.

Offers Over £585,000

Bollo Bridge Road, London W3 8UJ

- 1 Reception Rooms
- 2 Bedrooms
- 2 Bathrooms



The current owner says:

The property is in a fantastic location for the local shops, parks, schools and transport links.

Positioned on the eighth floor, with breath taking views over central London is this modern new build apartment in the popular Acton Gardens development.

Spread over a generous 862 sqft, this apartment boasts modern stylish interiors comprising of a large, open plan kitchen/living space filled with natural light from the floor to ceiling windows and balcony doors leading to a large balcony with stunning views over the city of London. There are also two good sized double bedrooms, with the master offering a beautiful en-suite.

Other benefits include a secure allocated parking space.

Munster Court is set just between South Acton station (Overground) and Acton Town station (Piccadilly and District Line) as well as the M4/A4. Chiswick Park Station and The High Road is also within short walking distance.

What's better:

This luxury apartment offers panoramic views of central London from its private south facing terrace.

