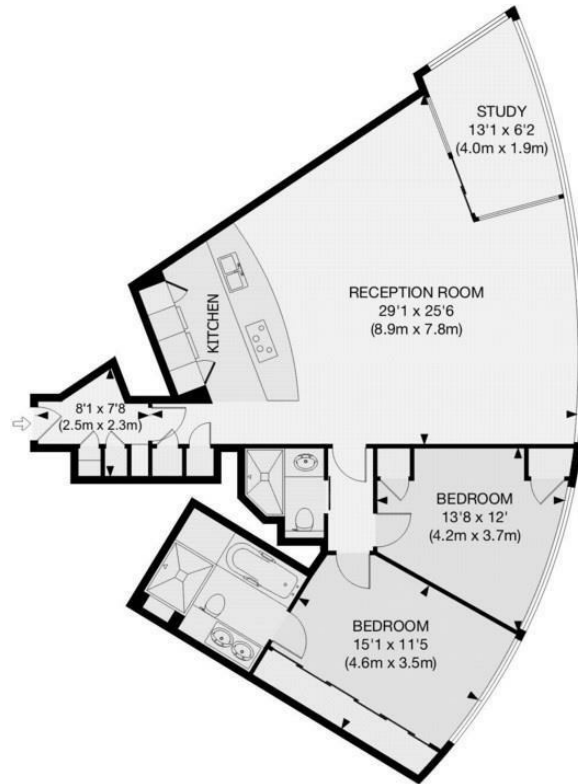




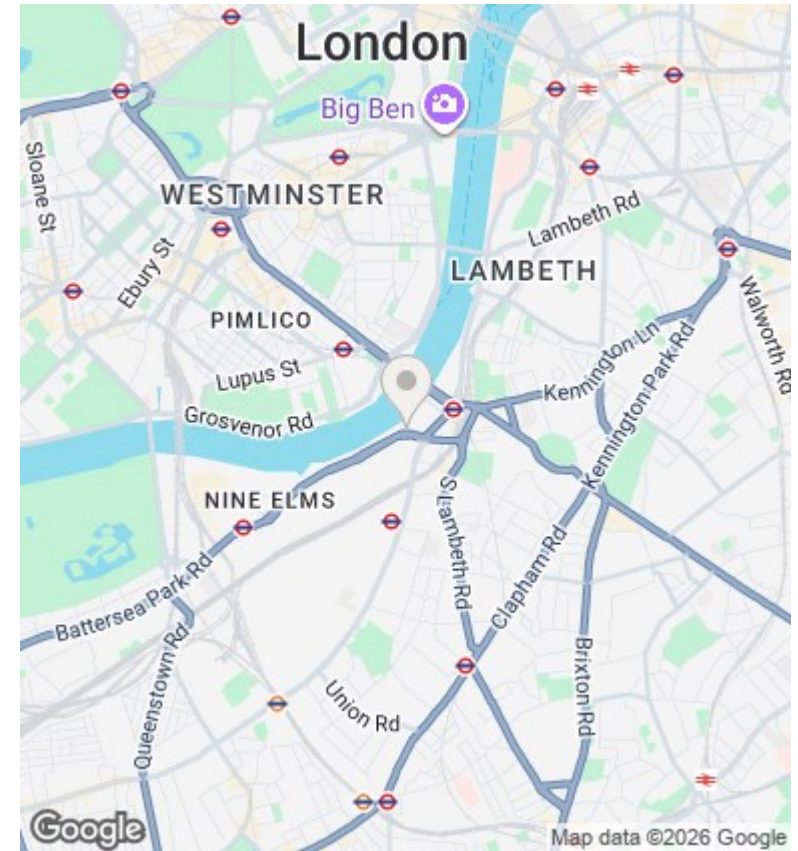
The Tower, 1 St George Wharf, Vauxhall SW8 2DA

£7,095 Per Month

- 24/7 concierge
- cinema
- allocated parking space
- gym/spa
- under floor heating
- river views
- swimming pool overlooking river
- air cooling
- dining room / meeting room



APPROX. GROSS INTERNAL FLOOR AREA 1075 SQ FT / 100 SQ M



Viewings

Viewings by arrangement only.
Call 02077225022 to make an appointment.

Council Tax Band

H

EPC Rating:

B

Energy Efficiency Rating		Current	Potential
<i>Very energy efficient - lower running costs</i>			
(92 plus) A			
(81-91) B		82	83
(69-80) C			
(55-68) D			
(39-54) E			
(21-38) F			
(1-20) G			
<i>Not energy efficient - higher running costs</i>			
England & Wales		EU Directive 2002/91/EC	