

Location:

Anderson Close is nearby to both North Acton tube station Acton Town (Central Line) & Acton Mainline Station (Elizabeth Line). The commuter has easy access to both A40 direct access to Central London.

Key points:

- Studio apartment
- 310 sqft
- Allocated parking space
- Ground floor apartment
- 14 Minute walk to North Acton station (Central Line)
- Perfect first time buyer or buy to let investment property.
- 12 Minute walk to Acton Mainline station (Elizabeth Line)
- Available now
- Modern apartment

Do Better:

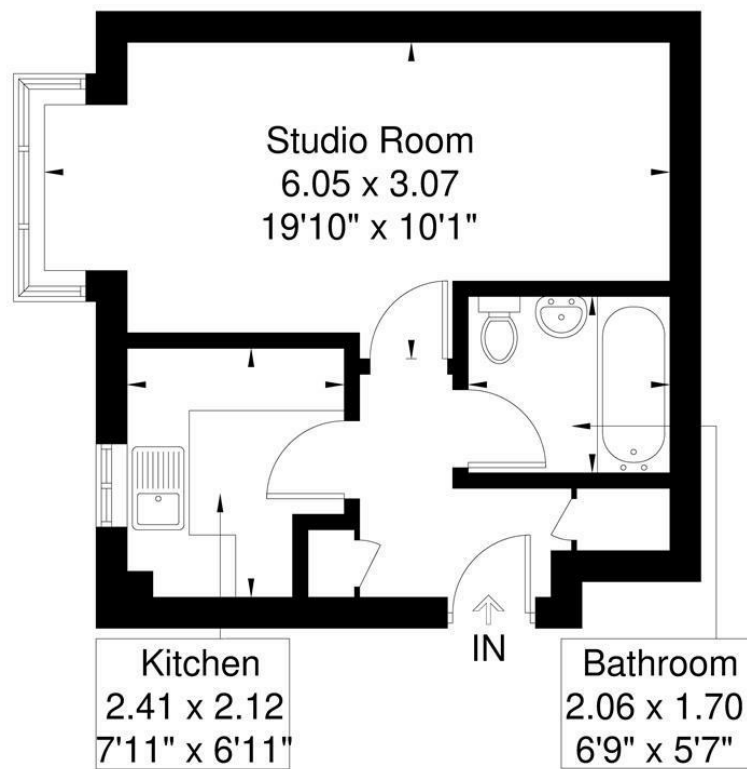
Acton
sales@astonrowe.co.uk

57-59 Churchfield Road,
Acton, London, W3 6AY

020 8992 3600



Anderson Close
Approximate Gross Internal Area = 28.8 sq m / 310 sq ft



Ground Floor

Although every attempt has been made to ensure accuracy, all measurements are approximate. The floorplan is for illustrative purposes only and not to scale.
© www.perspective.co.uk

Energy Efficiency Rating		Environmental Impact (CO ₂) Rating	
Current	Potential	Current	Potential
58	62		

£1,250 Per Month

Anderson Close, London W3 6YJ

- 1 Reception Rooms
- 0 Bedrooms
- 1 Bathrooms

The current owner says:

Available now

We are pleased to present, this modern studio apartment in good condition set within a private development in Acton. This property is situated on the ground floor and has a separate modern kitchen and reception/bedroom and a modern bathroom. Further benefits include allocated parking, share of freehold and no onward chain. This property is only a short distance to North Acton (Central Line Zone 2) and Acton Mainline Station (Elizabeth Line)

The Elizabeth Line is only a short walk from Anderson Close and the estimated train times from Acton Mainline station are:

- Bond Street - 9 minutes.
- Tottenham Court Road - 11 minutes.
- Liverpool Street - 16 minutes.
- Stratford Station - 25 minutes.
- Canary Wharf Station - 23 minutes.
- Heathrow - Between 18 minutes - 26 minutes for T2/3/4 and 5.
- Reading Station - 46 minutes.

What's better:

A wonderful studio apartment in W3.

