

**SW19**

*it's all in the postcode...*



## Kenilworth Avenue

**£1,850,000**

- Semi detached period house
- Off street parking
- In need of updating
- Private garden
- No onward chain
- Sought after location
- Council tax Band G
- EPC Rating



020 8544 2828

Wimbledon: Wimbledon Park: Colliers Wood

[www.SW19.com](http://www.SW19.com)

SW19 Estate Agents Ltd. Is registered in England & Wales No. 05508737

*it's all in the postcode...*

A rare opportunity to acquire this substantial five-bedroom semi-detached family home, offering exceptional potential and requiring complete modernisation throughout. Occupying a highly sought-after residential position on Kenilworth Avenue in Wimbledon Park, this spacious property provides the perfect opportunity for buyers to refurbish and redesign to their own specification, creating a truly outstanding family home. The property benefits from off-street parking to the front and a generous rear garden, offering excellent outdoor space for families and entertaining. Ideally located within easy reach of Wimbledon Park's excellent local amenities, reputable schools and transport links, this is an exciting opportunity to add significant value in a prime South West London location.

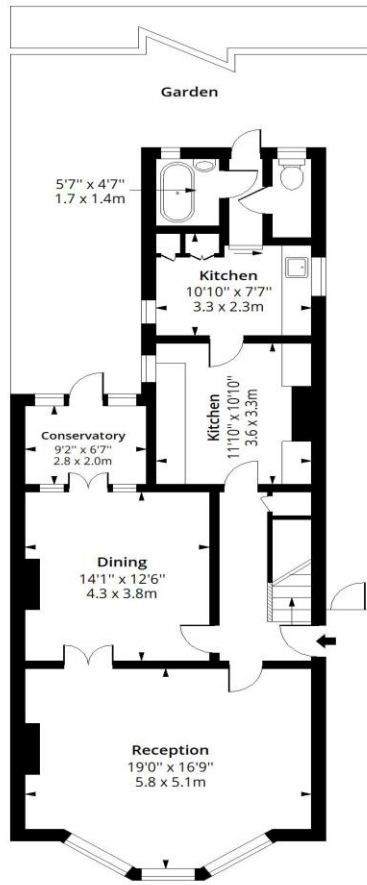


020 8544 2828  
Wimbledon: Wimbledon Park: Colliers Wood  
[www.SW19.com](http://www.SW19.com)  
SW19 Estate Agents Ltd. Is registered in England & Wales No. 05508737

*'it's all in the postcode...'*

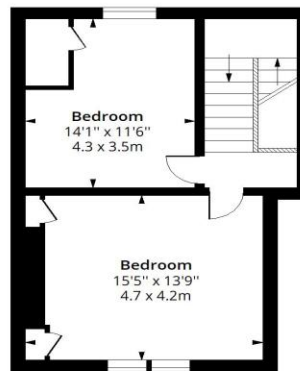
# Kenilworth Avenue SW19

Approx. Gross Internal Area 2270 Sq Ft - 210.88 Sq M



## Ground Floor

Floor Area 933 Sq Ft - 86.68 Sq M



## Second Floor

Floor Area 501 Sq Ft - 46.54 Sq M



## First Floor

Floor Area 836 Sq Ft - 77.66 Sq M

SW19



Measured according to RICS IPMS2. Floor plan is for illustrative purposes only and is not to scale. Every attempt has been made to ensure the accuracy of the floor plan shown, however all measurements, fixtures, fittings and data shown are an approximate interpretation for illustrative purposes only. 1 sq m = 10.76 sq feet.

lpaplus.com

Date: 30/6/2026

020 8544 2828

Wimbledon: Wimbledon Park: Colliers Wood

www.SW19.com

SW19 Estate Agents Ltd. Is registered in England & Wales No. 05508737

*'it's all in the postcode...'*