



Apartment 23, 7 Tiltman Place, London, N7 7EL

£2,000 Per Month

7 Tiltman Place, London N7 7EL

Set within an attractive contemporary development, this beautifully presented one-bedroom apartment offers stylish, light-filled accommodation.

Located on the second floor, the property features a generous open-plan reception room with a sleek integrated kitchen, creating an ideal space for both relaxing and entertaining. Floor-to-ceiling glazing floods the living area with natural light and provides direct access to a private balcony, offering pleasant open views and a peaceful outdoor retreat.

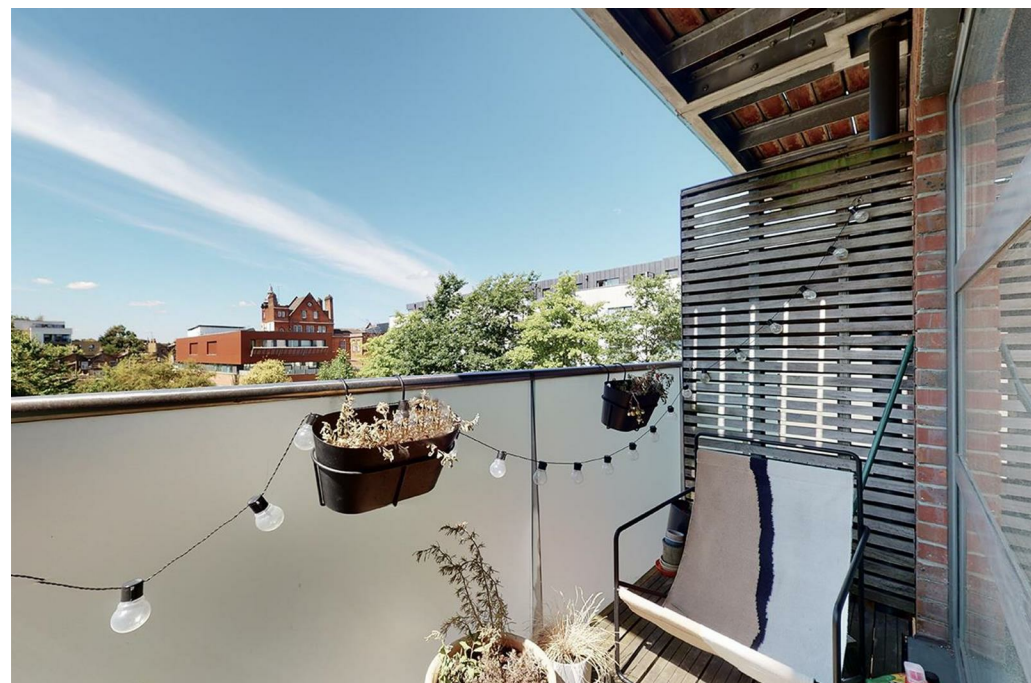
The spacious double bedroom benefits from fitted wardrobes and ample room for home working, while the modern bathroom is finished to a high standard with contemporary fittings and a full-sized bath.

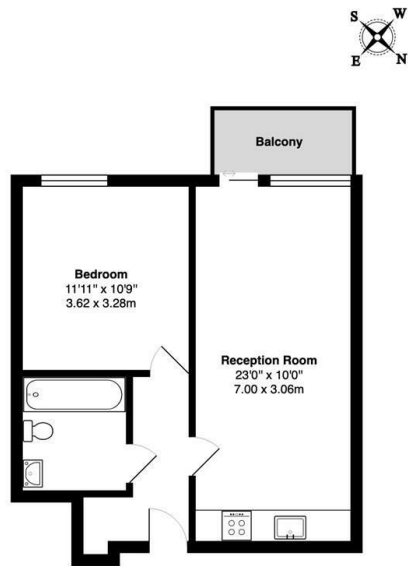
The apartment is presented in excellent decorative order throughout, with attractive wooden flooring, neutral interiors, and a thoughtfully designed layout that maximises both space and functionality.

Residents further benefit from secure entry and an enviable location close to excellent transport links, local amenities, cafés, and green open spaces.



Council Tax Band: D



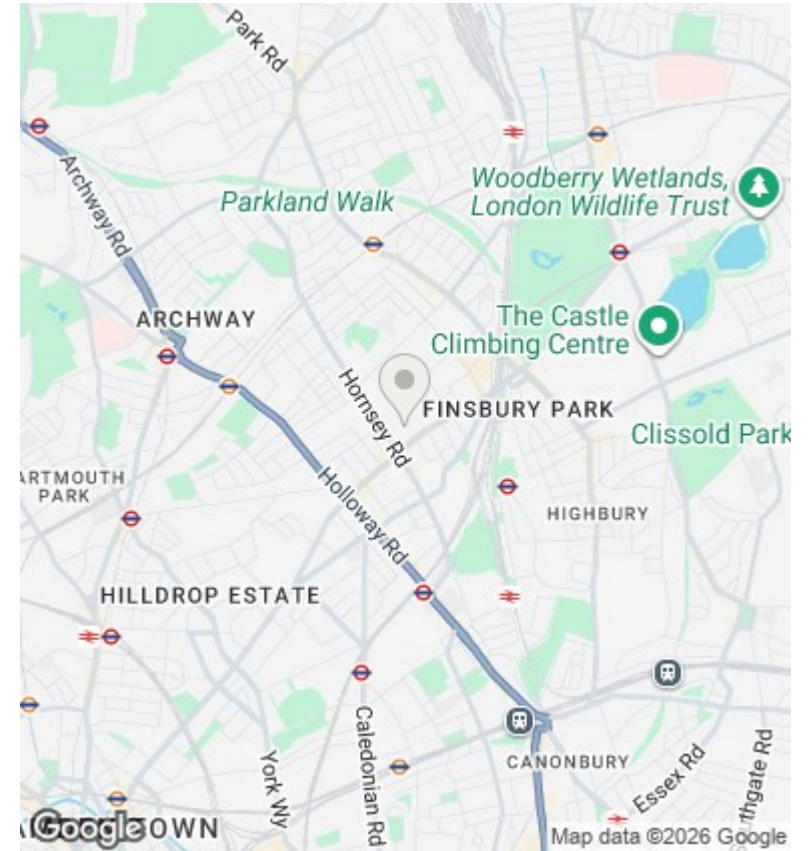


Second Floor

Tiltman place N7

Total Gross Area: 477 ft² ... 44.3 m²

All measurements are approximate and for identification guideline purposes only, not to scale.
Compliant with the RICS code of measuring practice



Directions

Viewings

Viewings by arrangement only. Call 02073593191 to make an appointment.

Council Tax Band

D

Energy Efficiency Rating		Current	Potential
Very energy efficient - lower running costs			
(92 plus) A			
(81-91) B			
(69-80) C		79	
(55-68) D			
(39-54) E			
(21-38) F			
(1-20) G			
Not energy efficient - higher running costs			
England & Wales		EU Directive 2002/91/EC	





