



FIELDHOUSE

T: +44 (0)20 7013 0770
F: +44 (0)20 7731 1964
PROPERTY@FHRES.CO.UK
FHRES.CO.UK



Flat F, 58-60 Sheen Road, Richmond On Thames, Surrey, TW9 1UF

TWO DOUBLE BEDROOM FIRST FLOOR FLAT WITH ONE ALLOCATED PARKING SPACE IN PRIVATE GATED AREA located moments from Richmond Town Centre and Train Station.

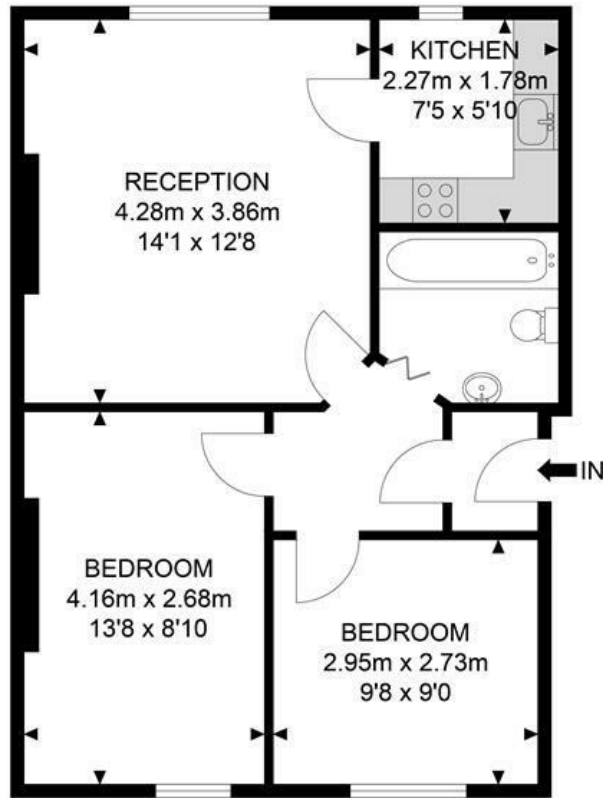
This property comprises an entrance hallway leading to a lounge, kitchen, two double bedrooms and bathroom with shower over bath. This property also benefits from gas central heating and one allocated parking space in a private gated area. Available end of July.

Council Tax: Wandsworth Borough Council
Council Tax Band: D

- TWO DOUBLE BEDROOMS
- ALLOCATED PARKING SPACE
- MOMENTS FROM RICHMOND TRAIN STATION

£2,100 PCM*

Sheen Road



2nd Floor



APPROX. GROSS INTERNAL FLOOR AREA 537.11 SQ FT / 49.90 SQM

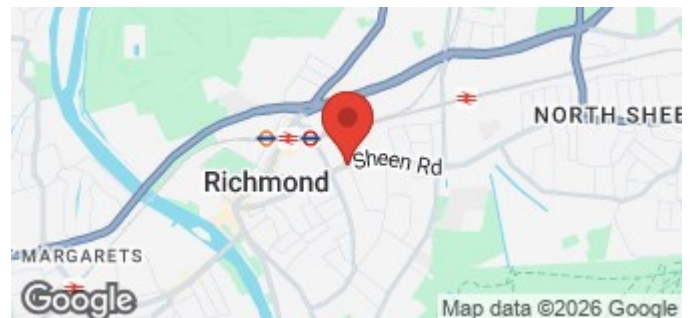
Whilst every attempt has been made to ensure the accuracy of the floor plan contained here, measurements of doors, windows, rooms and any other items are approximated and no responsibility is taken for any error, omission or mis-statement. This plan is for illustrative purposes only and should be used as such by any prospective purchaser. The service, system and appliances shown have not been tested and no guarantee as to their operability or efficiency can be given.

© SpacePhoto

Photography and Floor Plan

Energy Efficiency Rating		Current	Potential
Very energy efficient - lower running costs			
(92 plus) A			
(81-91) B			
(69-80) C			
(55-68) D			
(39-54) E			
(21-38) F			
(1-20) G			
Not energy efficient - higher running costs			
		70	78
England & Wales		EU Directive 2002/91/EC	

Environmental Impact (CO ₂) Rating		Current	Potential
Very environmentally friendly - lower CO ₂ emissions			
(92 plus) A			
(81-91) B			
(69-80) C			
(55-68) D			
(39-54) E			
(21-38) F			
(1-20) G			
Not environmentally friendly - higher CO ₂ emissions			
England & Wales		EU Directive 2002/91/EC	



FIELDHOUSE RESIDENTIAL LIMITED

Registered Address: 94 Wandsworth Bridge Road, London SW6 2TF
Registered in England No. 5097508 VAT No. GB 839 5267 87

