

Southfield Road, London, W4 1BB

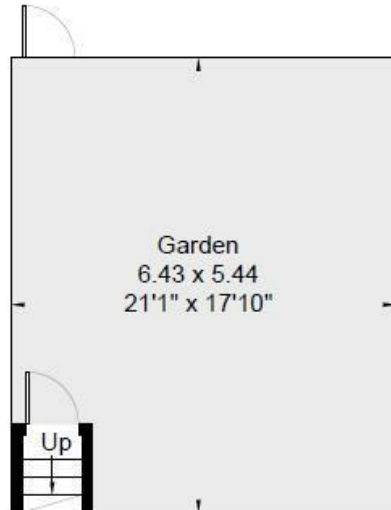
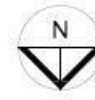
A recently renovated three bedroomed flat with the benefit of a 21'1" x 17'10" rear garden situated in this very popular residential area adjacent to the open spaces of Southfield recreation grounds & park and within walking distance of Chiswick high road with its abundance of boutique shops and restaurants. Accommodation provides: 17'3 x 11'11 open plan kitchen/reception area with stairs leading to a sunny rear garden with side access, modern fitted kitchen with integrated appliances, luxury ensuite tiled family bathroom with shower over bath, master bedroom with bay window overlooking Southfield park, further double bedroom and single bedroom ideal for a home office. Close proximity to Southfield Primary School. Transport links include Turnham Green & South Acton mainline station, numerous local bus routes with convenient vehicular access via A4/M4 to Central London, Heathrow & The West. Ealing Council Band D. EPC-D. Available 11th August. Offered unfurnished.

- Available 11th August
- Unfurnished
- Recently renovated three bedroomed top floor flat
- 21'1 x 17'10 private garden with rear access
- Luxury tiled bathroom
- Modern fitted kitchen
- Top rated Southfield Primary School in close proximity
- Great location opposite Southfield Park (including playground and tennis courts)

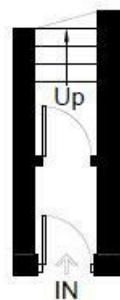
£3,000 Per Calendar Month

Southfield Road

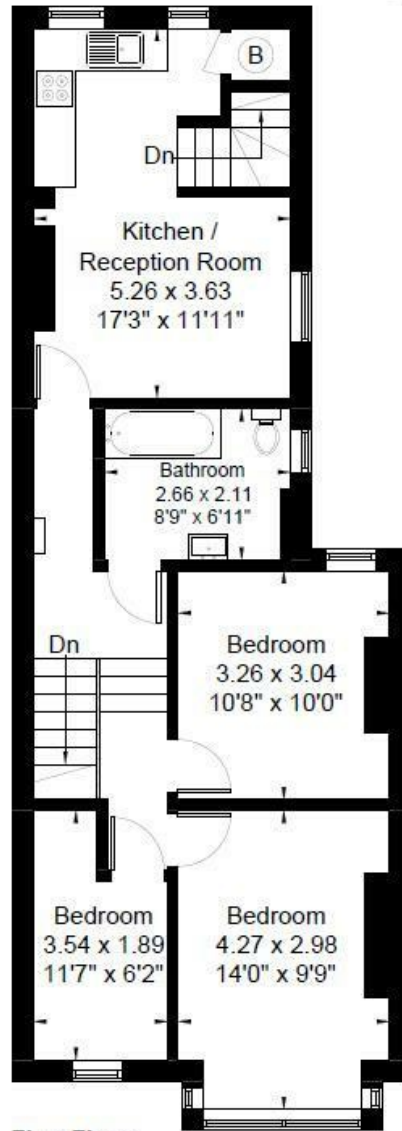
Approximate Gross Internal Area = 69.8 sq m / 751 sq ft



Ground Floor
0.8 sq m / 8 sq ft



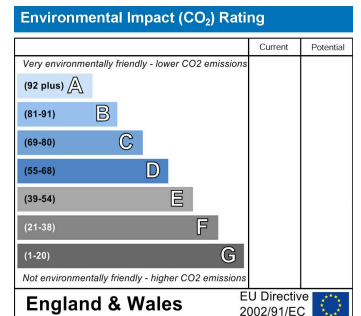
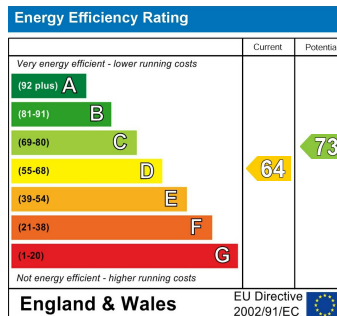
Ground Floor
3.1 sq m / 33 sq ft



First Floor
65.9 sq m / 709 sq ft

Although every attempt has been made to ensure accuracy, all measurements are approximate. The floorplan is for illustrative purposes only and not to scale.

© www.perspective.co.uk



5-7 Turnham Green Terrace, Chiswick, London, W4 1RG

Tel 020 8747 8800

E-mail lettings@whitmanandco.com

Website www.whitmanandco.com



MISREPRESENTATION ACT 1967

Whitman & Co. for themselves and for the vendors give notice that these particulars do not constitute any part of, an offer of contract. All statements contained in these particulars are made without responsibility on the part of Whitman & Co. or the vendor. None of the statements contained in these particulars is to be relied upon as statements or representations of facts. Any intending purchaser must satisfy himself by inspection or otherwise as to the correctness of each of the statements contained in these particulars. The vendor does not make or give, and neither Whitman & Co. or any person in their employment has any authority to make or give, any representation or warranty whatever in relation to the property.