



Kinnaird Avenue, London, W4
Guide Price £1,250,000

WHITMAN & CO.

SALES · LETTINGS · COMMERCIAL



Rare to the market, this generously proportioned four-bedroom family house sits on a large plot with the added benefit of a garage and off-street parking on this extremely sought-after residential road.

The property is accessed via a large entrance hall and comprises a 32' through reception room, summer room, kitchen/breakfast room, utility room, cloakroom, four bedrooms, family bathroom and private 59'1 landscaped garden with side access.

Situated within close proximity to numerous transport facilities and the shops along Grove Park Road and Station Parade. Offered for sale with no onward chain.



Kinnaird Avenue, W4

Approximate Gross Internal Area

199.02 sq m / 2142 sq ft

(Including Garage, Eaves Storage & External Storage)

Garage : 10.83 sq m / 117 sq ft

Eaves Storage : 12.24 sq m / 132 sq ft

External Storage : 6.31 sq m / 68 sq ft



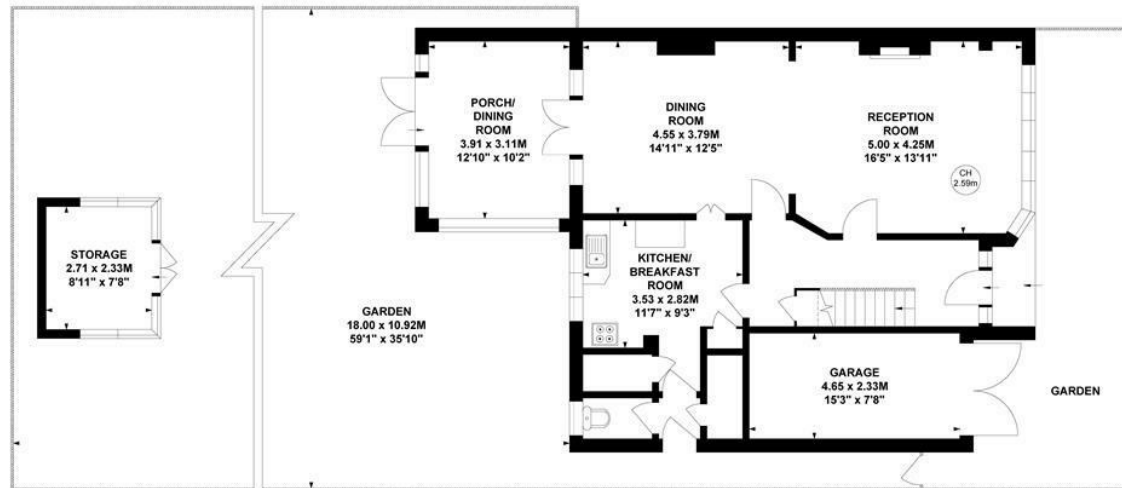
Key :

CH - Ceiling Height



First Floor

Second Floor



Ground Floor

Not to scale, for guidance only and must not be relied upon as a statement of fact.

All measurements and areas are approximate only

- Large entrance hall
- Kitchen/breakfast room
- 59'1 landscaped garden

- Through reception room
- Four bedrooms
- No onward chain

Tenure - Freehold
Local Authority - Hounslow
Council Tax - Band G

